

SHELVING RANGE



REGANIC
SYSTEME

ONE SHELVING SYSTEM – MULTIPLE OPTIONS

Designing shelving systems capable of providing an optimum of storage space as well as order and tidiness in any storage situation while at the same time being lightweight and cost-effective – this was our ambition. The result: The storage solutions represented by our shelving units. Made of high-quality materials, they excel because they are easy to handle and can be mounted in numerous ways. They offer sophisticated solutions down to the tiniest detail, such as height-adjustable feet or corner connections making it possible to install shelving systems around a 90° corner without having to put up an extra post-kit. Currently, we offer our most important shelving units in 25 different lengths ranging from 550 to 1500 mm. Thus, our high-quality standards enable us to supply genuine premium products Made in Germany.



TABLE OF CONTENTS

	Page
SHELVING SYSTEM 40000, STAINLESS STEEL	5 – 8
SHELVING SYSTEM 90000, ALUMINIUM SHELVING	9 – 12
SYSTEM 90000, ALUMINIUM / PLASTIC (PP)	13 – 16
SHELVING SYSTEM ACCESSORIES	17
STORAGE PADS	18
SHELVED TROLLEY UNITS	19
MOBILE SLIDING UNITS	20 – 21
BUTCHER'S FIXTURES / ACCESSORIES	22

VARIOUS SET-UP POSSIBILITIES

THE BASIC UNIT

This shelving system has been optimised to be as efficient and flexible as possible. Thus, all you need are two shelving uprights, suitable shelves, and a cross-brace.



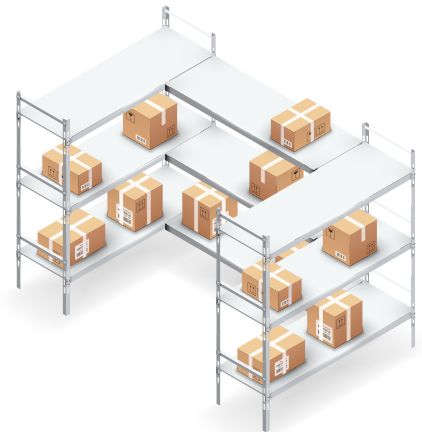
THE TWIN UNIT

When two rack units are positioned back to back, this increases usable depth. The shelves are set up with connectors, meaning no X-braces are necessary.



THE U-SHAPED UNIT

Setting a shelf up in U-shaped form merely means joining two basic racks with additional racking beams in between by using our solid corner connectors. That way you save two rack uprights.



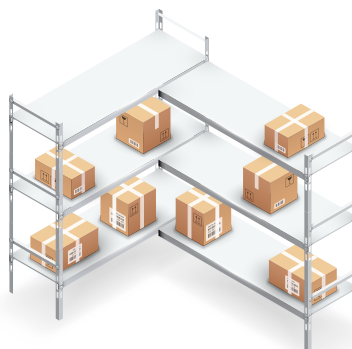
THE ADD-ON UNIT

When opting for an add-on shelf, you will save one upright post-kit per unit. Shelf boards can be hooked into both sides of the shelf upright.

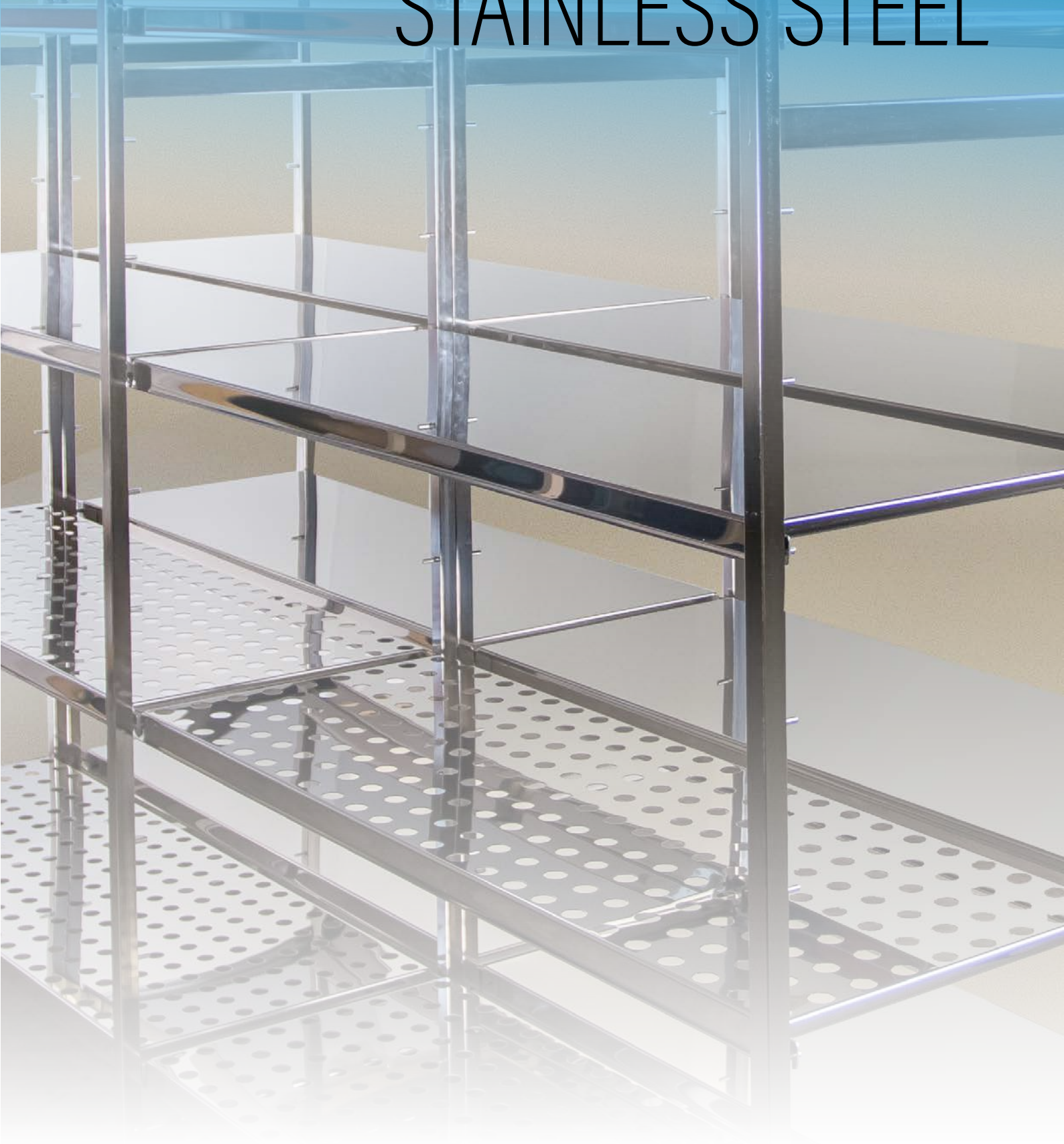


THE RIGHT-ANGLE UNIT

This 90-degree corner solution is pretty simple: Using corner-connecting elements you save an additional shelf upright and are able to make optimal use of the additional storage space provided.



SHELVING SYSTEM 40000 STAINLESS STEEL





- **Stainless steel, type 1.4301**
- **Tested and approved by the German Technical Inspection as well as Equipment and Product Safety Authorities (TÜV/GS)**
- **Plug-in System based on modular principle**
- **Free-standing, with high level of stability**
- **Numerous combination varieties relating to height, depth, and length**
- **Meets even the most stringent hygiene requirements, easy to clean**
- **Optimum use of storage space**
- **For multi-purpose use in industry and trade and in the catering business**
- **X-braces supporting every third shelving unit to ensure high level of stability**
- **Suitable for heavy loads**

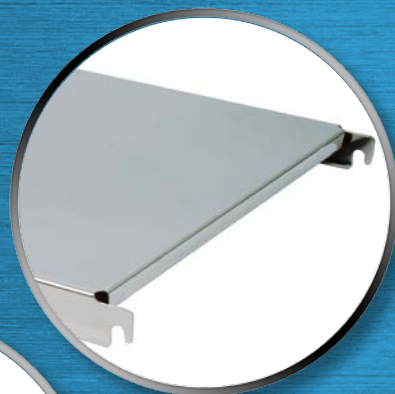
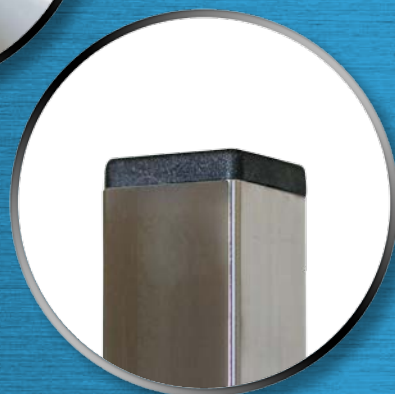


Headed
dowels for
shelves
in 150mm
grid

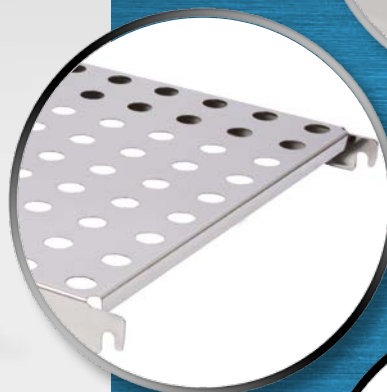


Corner connectors
for 90-degree set-up

Closu-
re-caps
for better
hygiene



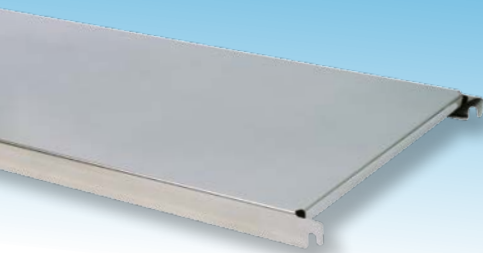
2 different
shelf-board variants



Feet
height-ad-
justable up
to 30mm

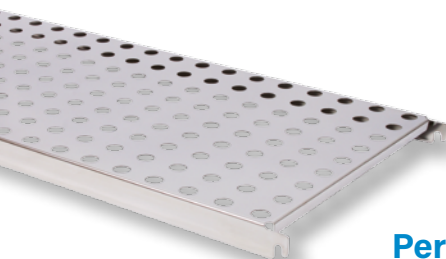


rostfrei★



Board plate

1.0 mm thick



Perforated plate

1.0 mm thick

holes Ø 24 mm division 50 mm

Shelf Uprights

Height interval grid 150mm

Heights:

1500 mm

1650 mm

1800 mm

1950 mm

Depths:

300 mm

350 mm

400 mm

450 mm

500 mm

600 mm

* Special heights on request



Shelf lengths

Basic racks ranging from 550 to 1500mm in 25mm grid

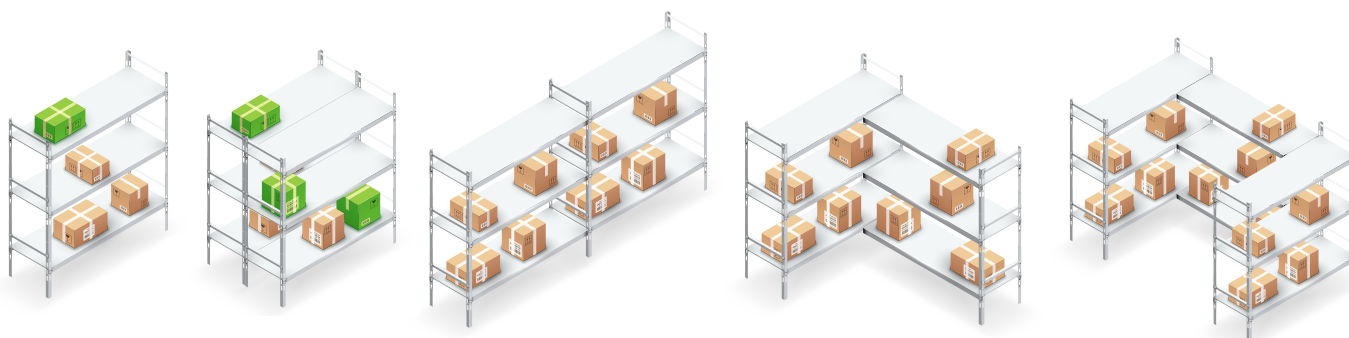
Extension racks 525 to 1475mm in 25mm grid

For lengths from 600 to 1300mm per shelf unit, maximum shelf-load capacity is 150 kg; with lengths from 1300 to 1500mm per unit, maximum shelf-load capacity is 120 kg. Section-load capacity is 1200 kg for single units and 800 kg for units positioned in straight line. For units set up at right angles with corner connectors, the shelf-load capacity of the boards decreases by one-third.

Shelf load	Shelf load	Shelf load
Shelf load	Shelf load	Shelf load
Shelf load	Shelf load	Shelf load
Shelf load	Shelf load	Shelf load

Sum of shelf loads per section = section load

Mounting Options



SHELVING SYSTEM 90000, ALUMINIUM





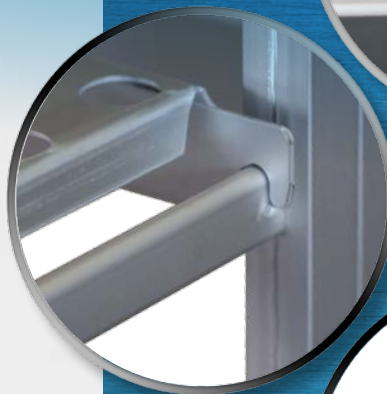
- Anodised aluminium
- Tested and approved by the German Technical Inspection as well as Equipment and Product Safety Authorities (TÜV/GS)
- Plug-in System based on modular principle
- Free-standing, with high stability
- Numerous combination varieties relating to height, depth, and length
- Meets the most stringent hygiene requirements, easy to clean
- Optimum use of storage space
- X-braces supporting every third rack unit to ensure high level of stability



Corner
connectors
for 90-degree
set-up



Solid heavy-duty
supports at 150mm in-
tervals for heavy loads



Closure-caps for
better hygiene



3 different
shelf-board
variants

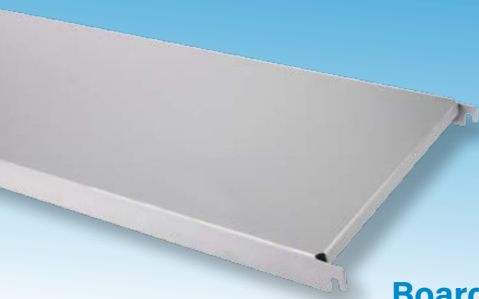


Feet
height-ad-
justable up
to 30mm




**MADE IN
GERMANY**





Board plate

1.5 mm thick



Perforated plate

1.5 mm thick

holes Ø 24 mm division 50 mm



Grated plate

Shelf uprights

Height interval grid 150mm

Heights:	1500 mm
	1650 mm
	1800 mm
	1950 mm
Depths:	300 mm
	350 mm
	400 mm
	450 mm
	500 mm
	600 mm

* Special heights on request



Shelf lengths

Basic units ranging from 550 to 1500mm in 25mm grid

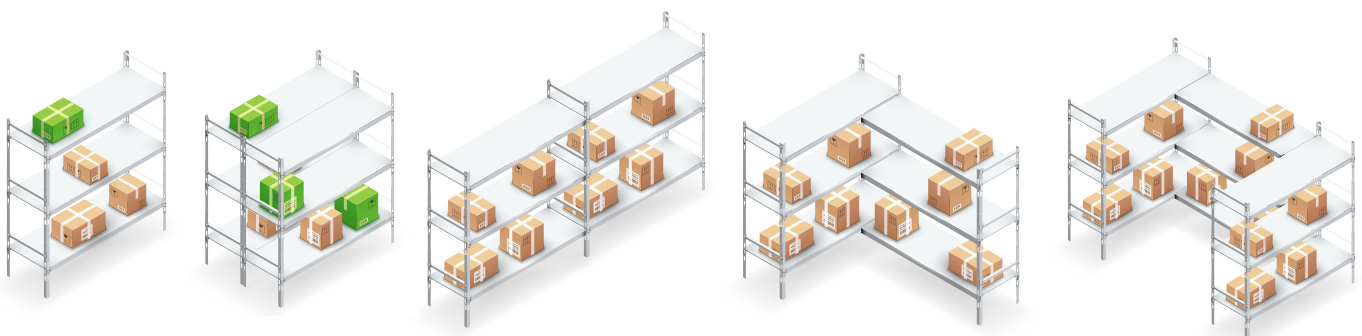
Extension units 525 to 1475mm in 25mm grid

For lengths from 600 to 1000mm per shelving unit, maximum shelf-load capacity is 150 kg; with lengths from 1000 to 1500mm per shelf unit, maximum load capacity is 120 kg. Section-load capacity is 800 kg for single units and 600 kg for units positioned in straight line. For shelves set up at right angles with corner connectors, the shelf-load capacity of the boards decreases by one-third.

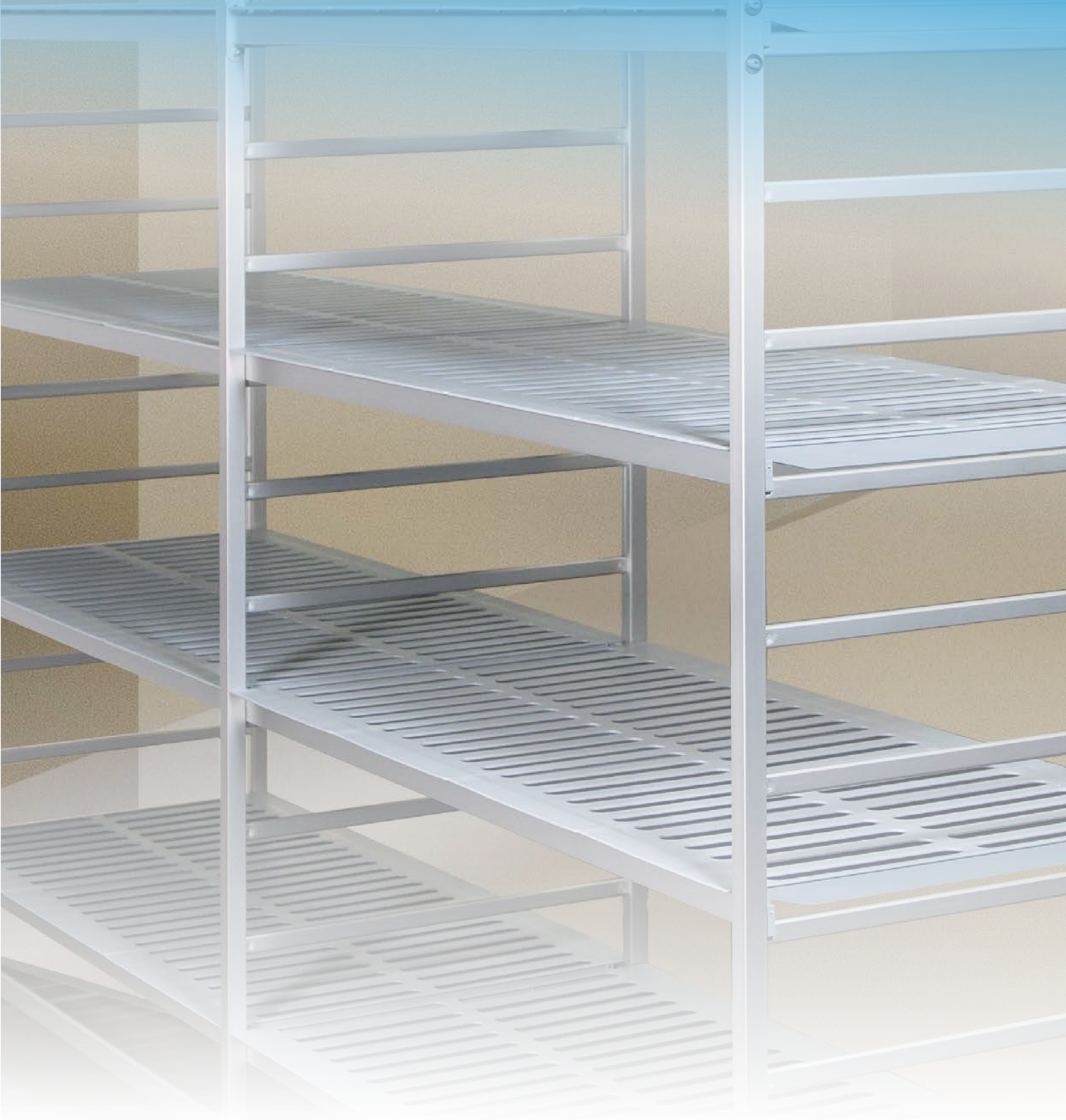
Mounting options

Shelf load	Shelf load	Shelf load
Shelf load	Shelf load	Shelf load
Shelf load	Shelf load	Shelf load
Shelf load	Shelf load	Shelf load

Sum of shelf loads per section = section load



SHELVING SYSTEM 90000, ALUMINIUM / PLASTIC





- Anodised aluminium shelf uprights
- Plastic shelf-boards made of environment-friendly, recyclable polypropylene
- Boards can easily be cleaned in dishwashers
- Tested and approved by the German Technical Inspection as well as Equipment and Product Safety Authorities (TÜV/GS)
- Plug-in System based on modular principle
- Free-standing, with high level of stability
- Numerous combination varieties relating to height, depth, and length
- Meets the most stringent hygiene requirements, easy to clean
- Optimum use of storage space
- For multiple use in industry, trade and the catering business
- X-braces supporting every third rack unit to ensure high level of stability



Plastic up-right rests to make maximum use of the full rack depth



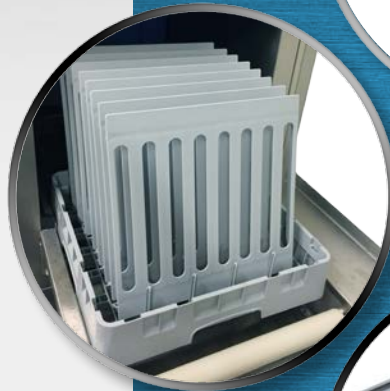
Corner connectors for set-up around a 90-degree corner



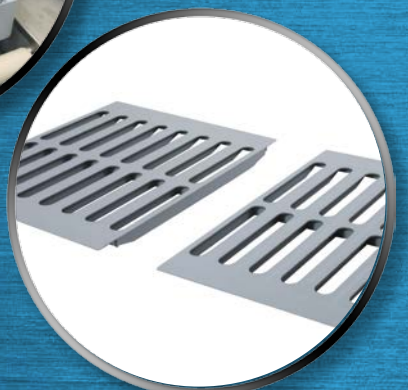
Easy assembly of the bars at 150mm intervals



Closure-caps for better hygiene

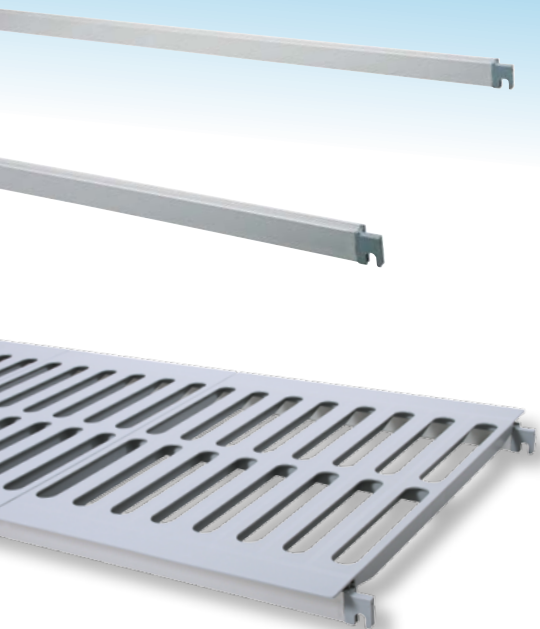


Feet height-adjustable up to 30mm



Plastic shelving plates grated and dishwasher-safe





Vented plastic boards

aluminium / polypropylene

SHELVING UPRIGHTS

Height interval grid 150mm

Heights:	1500 mm
	1650 mm
	1800 mm
	1950 mm
Depths:	300 mm
	400 mm
	500 mm
	600 mm

* Special heights on request



Shelf lengths

Basic units ranging from 650 to 1550mm in 100mm grid

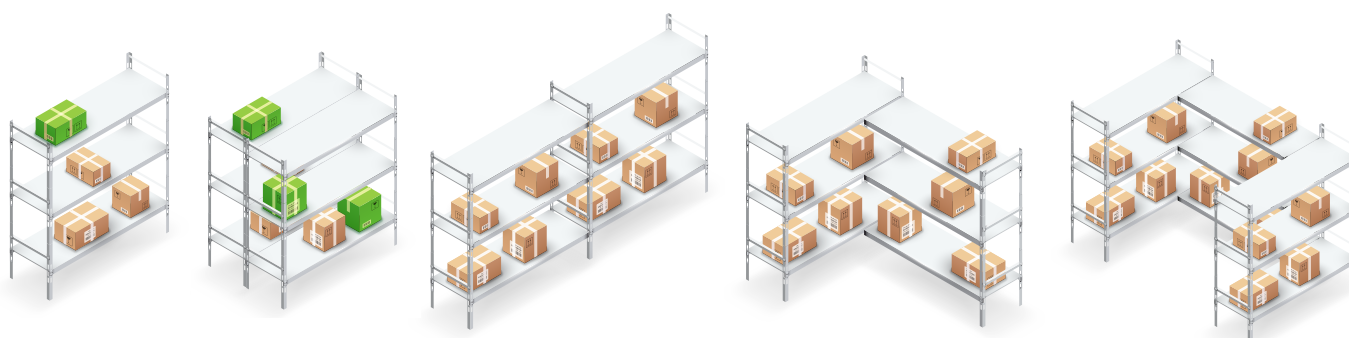
Extension units 625 to 1525mm in 100mm grid

For lengths from 600 to 1300mm per shelf unit, maximum shelf-load capacity is 150 kg; with lengths from 1300 to 1500mm per shelf unit, maximum weight-bearing capacity is 120 kg. Section-load capacity is 800 kg for single units and 600 kg for units positioned in straight line. For units set up at right angles with corner connectors, the shelf-load capacity of the boards decreases by one-third.

Shelf load	Shelf load	Shelf load
Shelf load	Shelf load	Shelf load
Shelf load	Shelf load	Shelf load
Shelf load	Shelf load	Shelf load

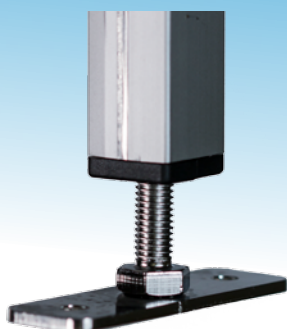
Sum of shelf loads per section = section load

Mounting options



ACCESSORIES SHELVING SYSTEMS

FLOOR AND CEILING MOUNT



For optimum fastening of shelf uprights on floors or under ceilings

WALL ALIGNMENT



To adjust uneven wall surfaces up to 45mm, the alignment kit can be used. In that case, X-bracing is not needed.

CORNER-CONNECTING CLIPS



In order to set up successive extension racks at 90-degree angles, 2 corner-connecting clips per side and shelf-board are required.

WALL MOUNT



For mounting a shelving unit to a wall. Provides additional stability and safety

SUPPORT BAR



Support bars prevent stored goods from falling off boards.

OVERHEAD RAILS



Overhead rail for hygienic and professional storage of meat and sausage products.

SUPPORT BEAMS



Support beams increase the weight-bearing capacity of a shelf-board by one-third.

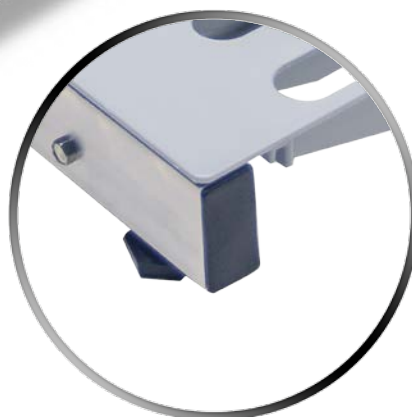
STORAGE PADS

Storage pads with vented plastic plates

aluminium / polypropylene



feet height-adjustable
up to 30mm



Length:

600 mm

700 mm

800 mm

900 mm

1000 mm

1100 mm

1200 mm

1300 mm

1400 mm

1500 mm

depth:

300 mm

400 mm

500 mm

600 mm

- For storing goods 70mm above ground
- Plastic grates ensure maximum air circulation
- **Overall weight-bearing capacity 600 kg**



SHELVED TROLLEY SYSTEMS

40000 / 90000



Solid low-resistance swivel castors, plastic, in rust-proof steel housing.



Our transport trolleys come in three varieties: Stainless-steel, aluminium, and aluminium / plastic. One trolley unit consists of two shelf uprights, 4 boards, 4 screw-lock cross-braces and four castors (two of them fixed) including deflector.

MOBILE SLIDING UNITS

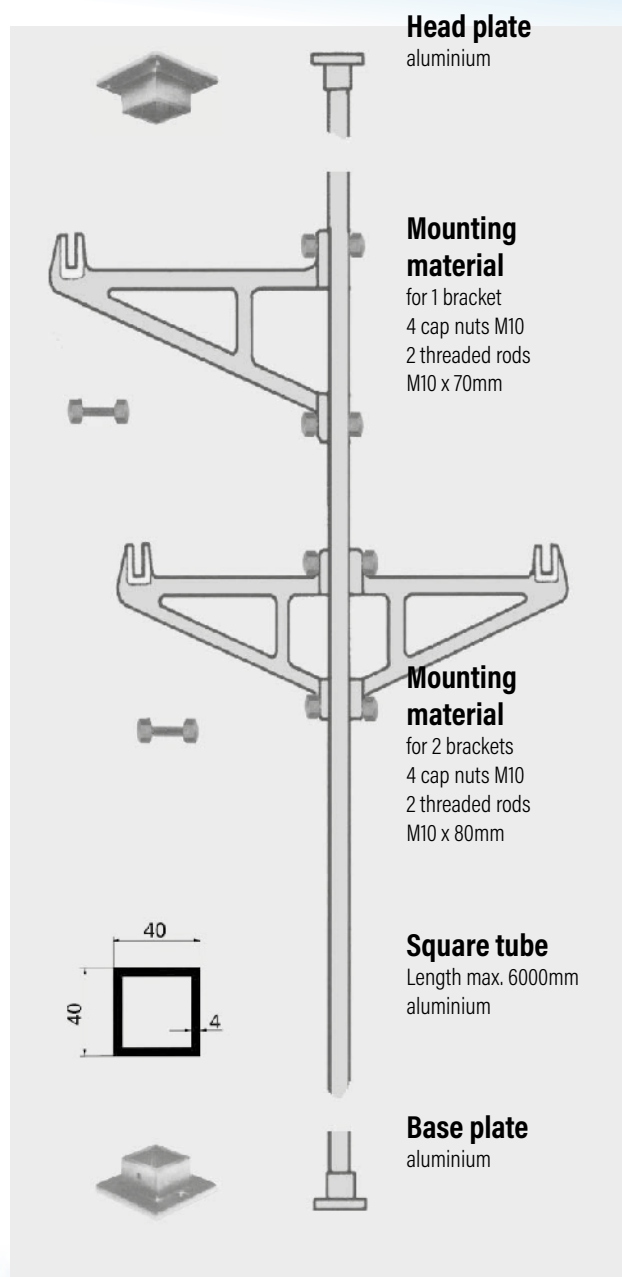




Our sliding units come in three choices: Stainless-steel, aluminium, and aluminium / plastic. A storage solution like this increases storage capacity by up to forty per cent. The systems are available as single units, but also as twin racks with screw-lock crosspieces in order to make maximum use of the shelf depth without X-braces. High-quality castors running on rails (which need not be screwed to the floor) ensure easy gliding of the shelving units. Installation of the track system is simple, provided the floor surface is even.

OVERHEAD RAILS AND HOOKS FOR MEAT AND SAUSAGE PRODUCTS

- Aluminium rails and hooks for meats and sausages
- Screw-lock mounting columns to be installed between floor and ceiling



NOTES



Warsteiner Reganic
Friedrich-Harkort-Straße 9
59581 Warstein
Fon: +49 2902 774930
info@reganic.de
www.reganic.de